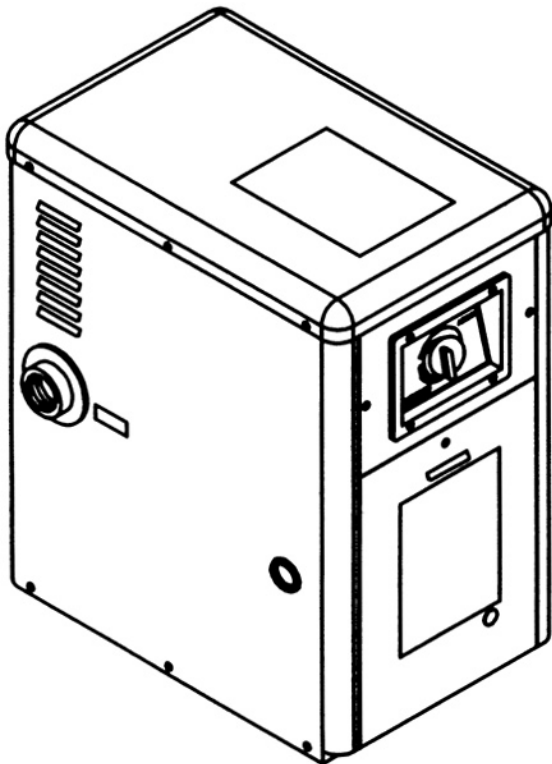


# HAYWARD®

## Installation, Operation & Service Procedures Above Ground Pool Heater

Models H100ID1 & H100IDP1

Unit must be installed outdoors only  
and below an altitude of 2000 feet



### FOR YOUR SAFETY

**WARNING:** If the information in these instructions is not followed exactly, a fire or explosion may result causing property damage, personal injury or death.

- Do not store or use gasoline or other flammable vapors and liquids in the vicinity of this or any other appliance.

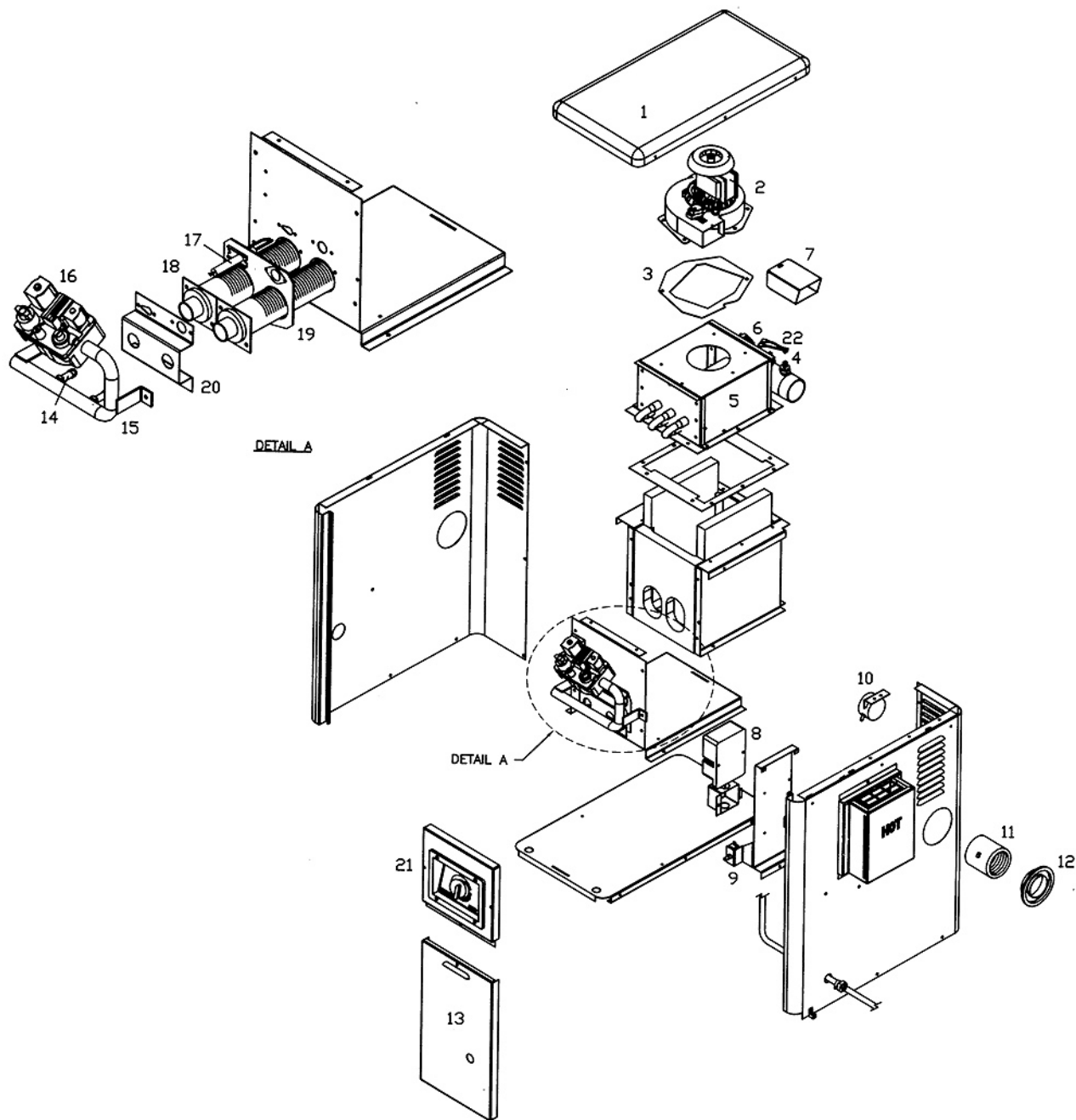
#### WHAT TO DO IF YOU SMELL GAS

- Do not try to light any appliance.
- Do not touch any electrical switch; do not use any phone in your building.
- Immediately call your gas supplier from a neighbor's phone. Follow the gas supplier's instructions.
- If you cannot reach your gas supplier, call the fire department.

- Installation and service must be performed by a qualified installer, service agency or the gas supplier.



# Parts List & Illustration



## ITEM NO. DESCRIPTION

ITEM NO.	DESCRIPTION	PART NO.
1.	Jacket, Top	IDX JKT 1100
2.	Combustion Blower	IDX BWR 1930
3.	Blower Gasket	IDX BLG 1930
4.	High Limit Kit	IDX HLK 1930
5.	Heat Exchanger Assembly (dual tubes)	IDX HXA 1100
5.	Heat Exchanger Assembly (single tube after 6/99)	IDX HXA 1101
6.	Water Pressure Switch	IDX WPS 1930
7.	Combustion Blower Transition	IDX TRA 1930
8.	Interlock Switch	IDX ILS 1930
9.	Control Module	IDX MOD 1930
10.	Air Pressure Switch	IDX APS 1930
11.	Coupling	IDX CPG 1930
12.	Crommet 1 1/2" Pipe	IDX GRM 0001

## ITEM NO. DESCRIPTION

ITEM NO.	DESCRIPTION	PART NO.
13.	Front Access Door	IDX FAD 1101
14.	Burner Orifice, Natural Gas	IDX ORF 1933
14.	Burner Orifice, Propane	IDX ORF 1934
15.	Gas Manifold	IDX MAN 1100
16.	Gas Valve	IDX VAL 1930
17.	Ignitor with cable	IDX IGN 1930
18.	Burner	IDX BNR 1930
19.	Burner Gasket	IDX BRG 1930
20.	Air Orifice Bracket, Natural Gas	IDX AOB 1933
20.	Air Orifice Bracket, Propane	IDX AOB 1934
21.	Control Panel Assembly	IDX CPA 1100
22.	Wire Harness	IDX WHA 1930
22.	Wire Harness (after 1/00)	IDX WHA 1931